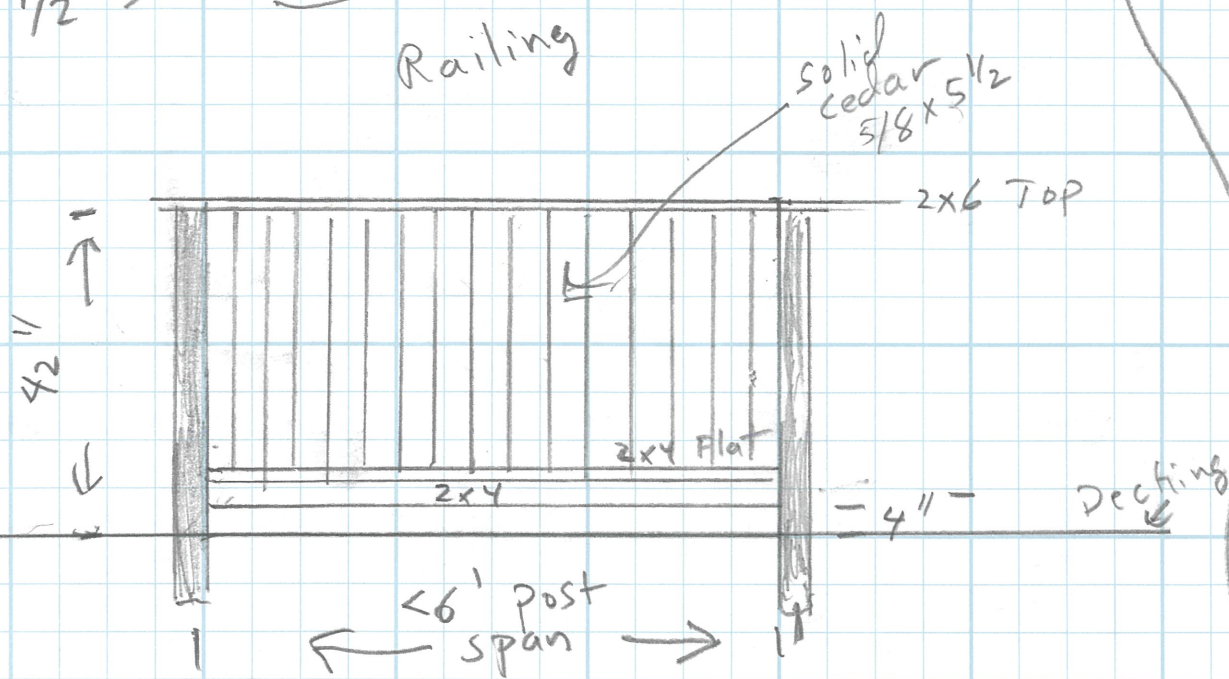


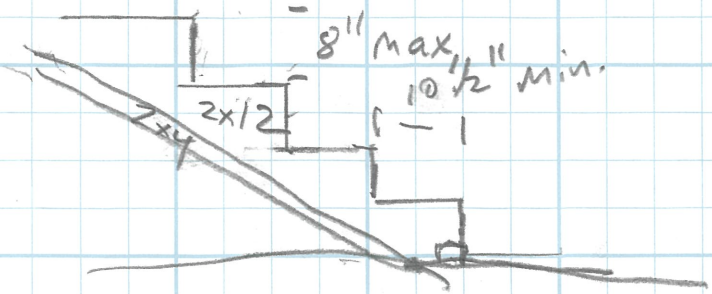
Scale  
1/2" = 1'



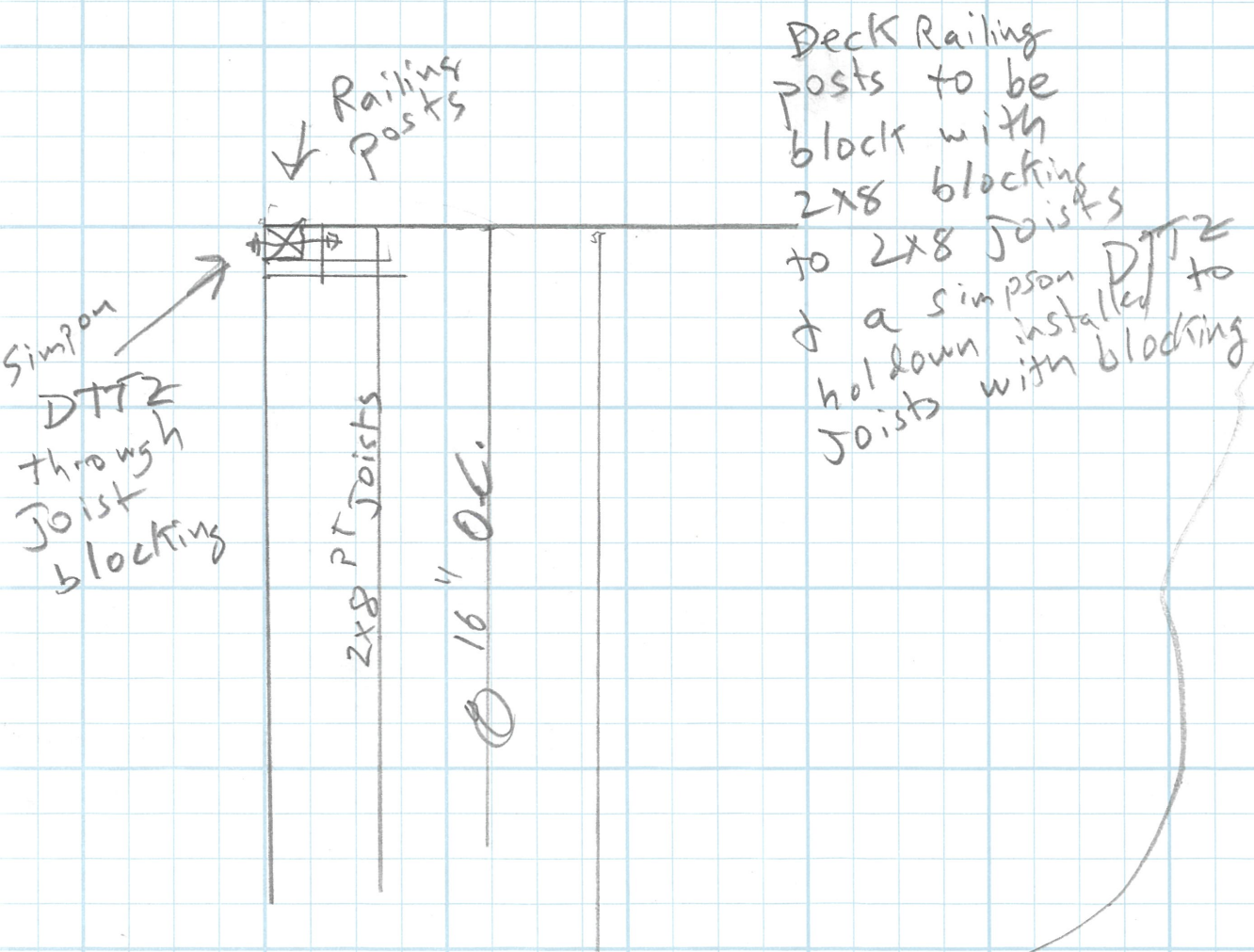
Deck

Deck constructed with 4x8 PT Beams post up from 12"x12"x16" Deep Concrete Footings post secured concrete with PB42 brackets  
 Simpson 4x BCS 2max post to beam  
 h2.5 Hurricanes from Joists to beam

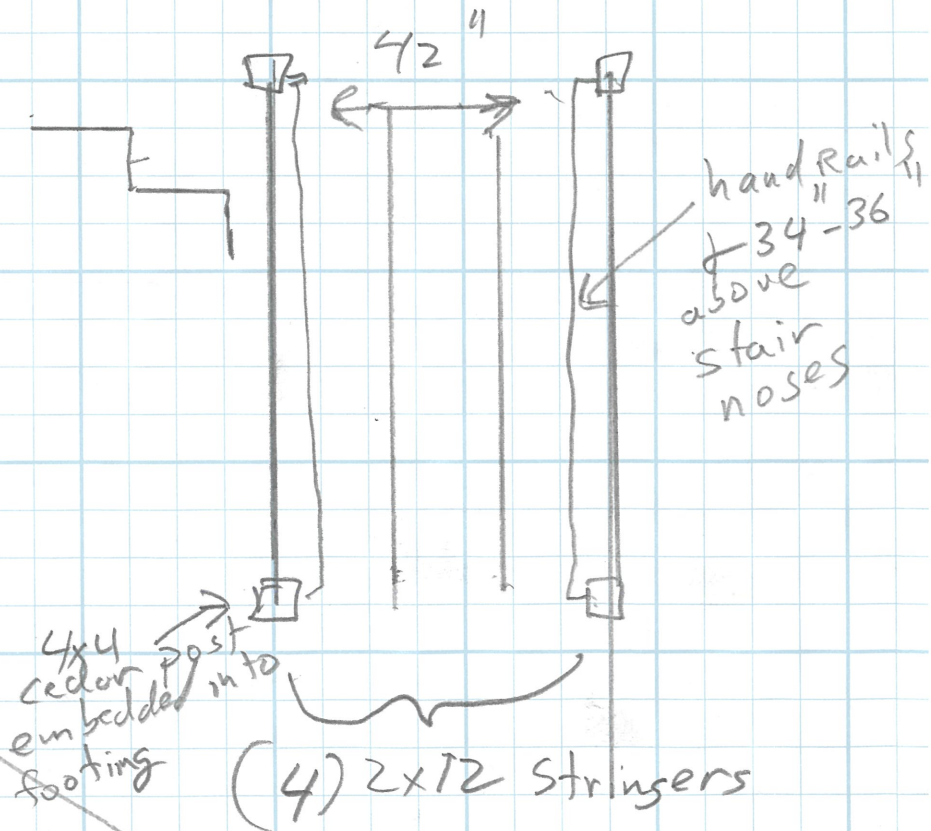
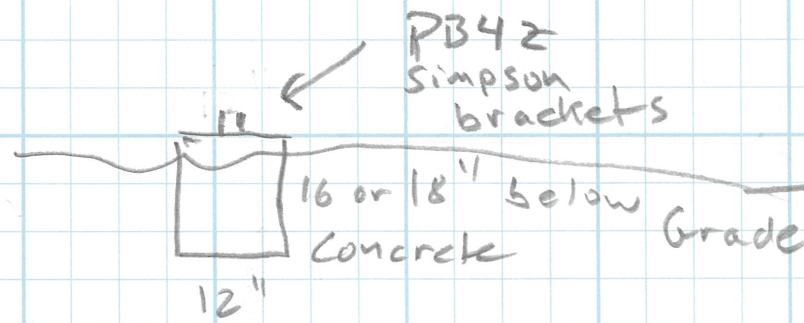
Scale  
1/2" = 1'



stair stringers calculated and cut from 2x12 PT boards with < 8" Risers + 10 1/2" treads  
 stair stringers strengthened with sistered 2x4's



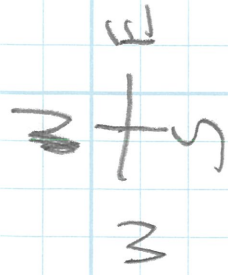
Deck Footings



Deck Railing posts to be block with 2x8 blocking to 2x8 Joists & a Simpson DTT2 hold down installed to Joists with blocking

PB42 Simpson brackets

handrails 34-36" above stair noses



1/8" = 1'  
Scale

38676 Pioneer Blvd

Pioneer Blvd

Sidewalk 7'

Dirt

Retaining wall

asphalt  
Drive way

Rebuild  
Existing Deck  
to code

dashed  
line  
existing Deck  
line

Proposed adding  
Parking spot 8'  
← 24'

Existing  
Concrete  
parking

entry  
door

Restaurant

Existing  
entrance

1001

156

this distance  
might be ex assented

1511

38676 Pioneer Blvd Side Walk

1/4" = 1'  
Scale  
N  
W + E  
S

2x8 PT Deck Joists  
16" O.C.

Deck Rail posts

4x8 PT beams

Footings  
12" x 12" x  
16" deep  
concrete  
with PBR  
brackets

Existing Deck  
trying to save  
Right above  
Ground level

Railing 42" above  
Decking less  
than 4" bottom gap  
from decking with  
Solid cedar Railings  
4x4 Cedar posts  
attached to 2x8 joists  
with DITZ +  
blocking  
Continuous Railings  
including stairway  
from parking to  
Deck

2' x 1' Footing  
Concrete Retaining Wall  
Stem Wall  
Concrete

Dirt line  
Asphalt Driveway

3' tall concrete  
Retaining wall  
8" thick with  
2' x 1' footing  
Parking

entry door

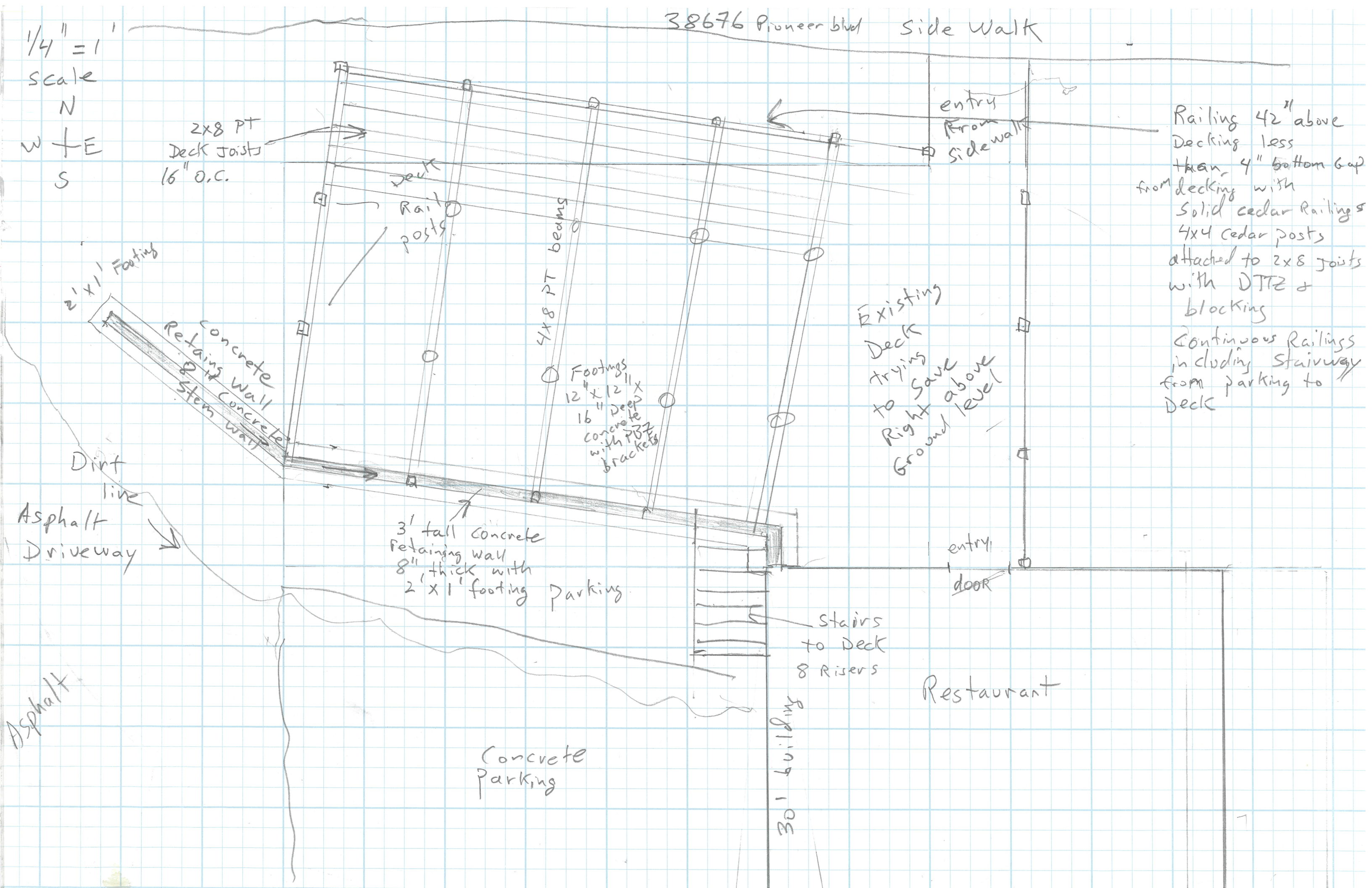
Stairs  
to Deck  
8 Risers

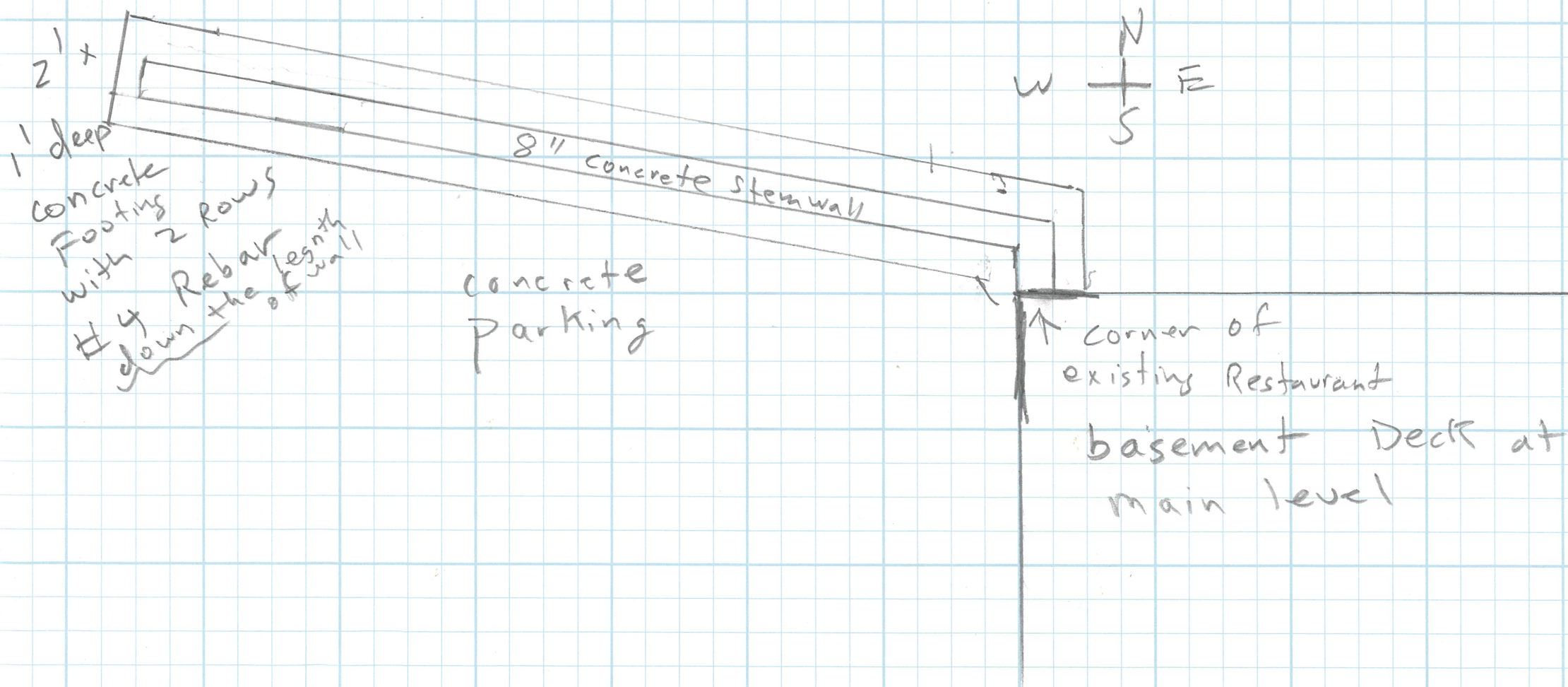
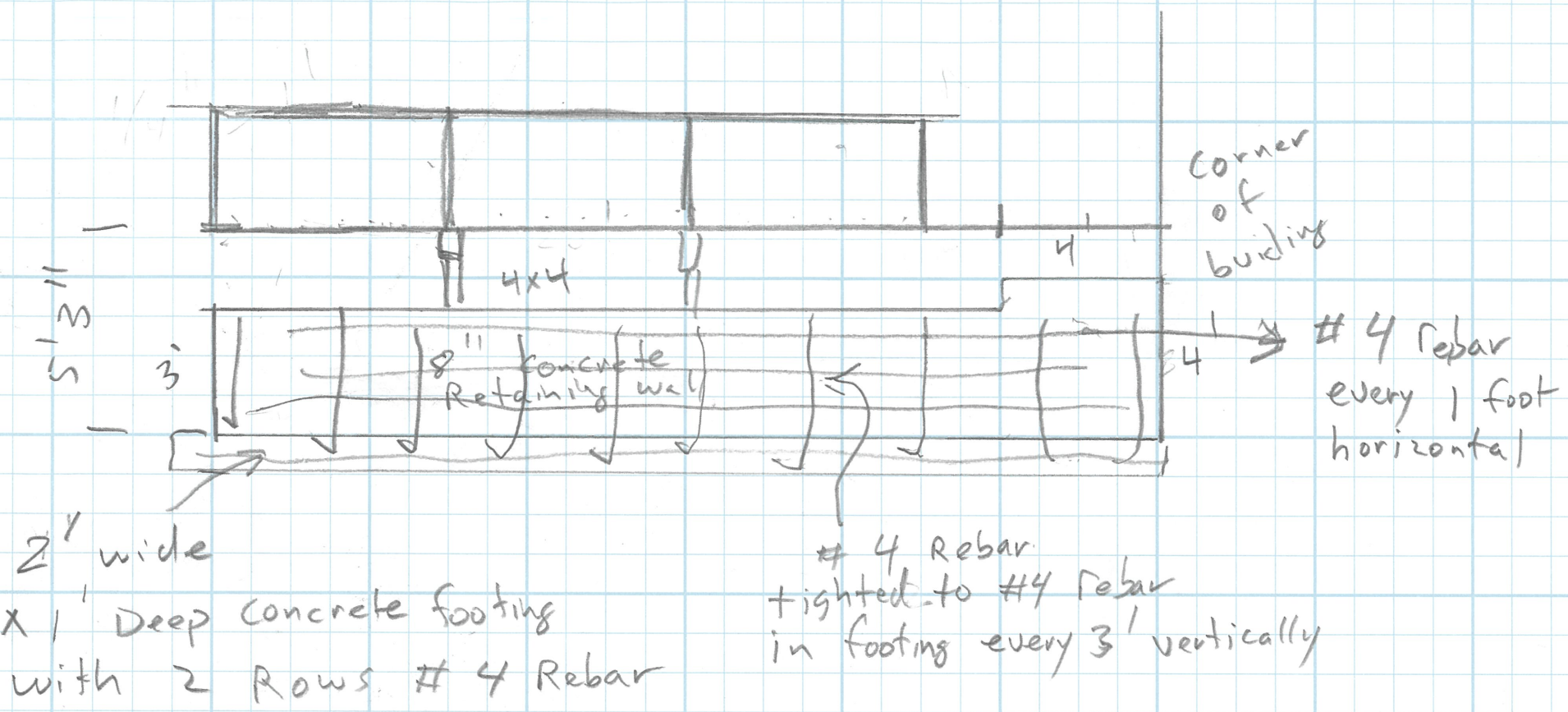
Restaurant

Concrete  
Parking

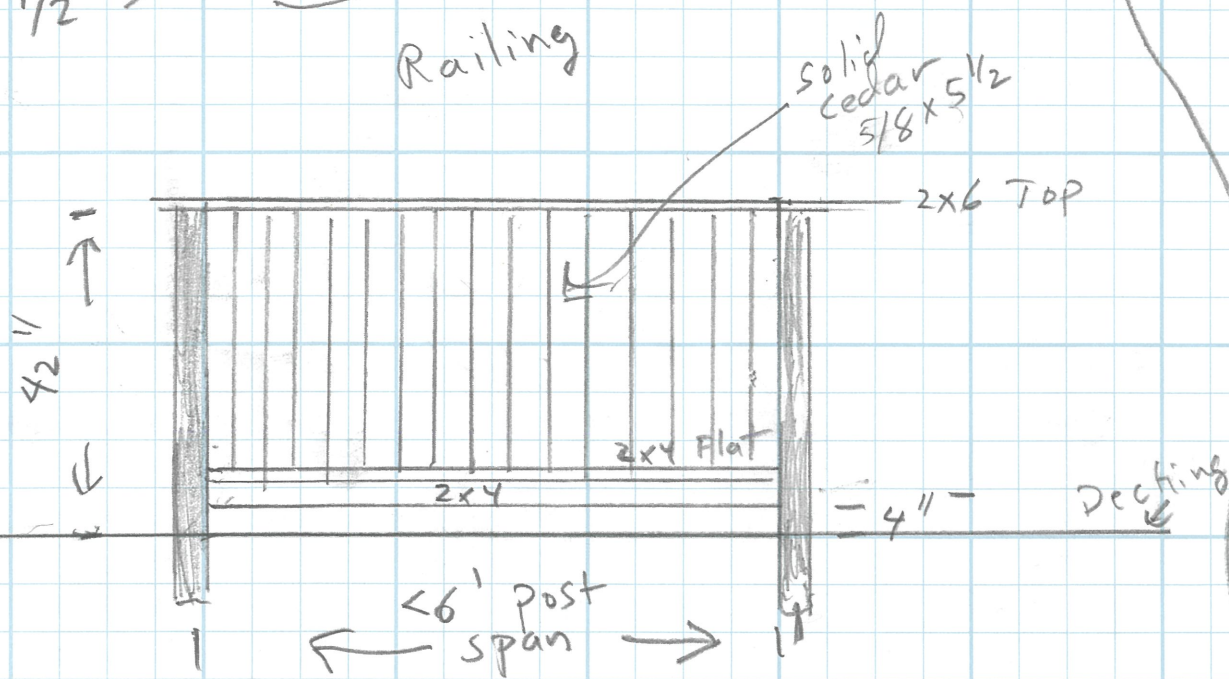
30' building

Asphalt





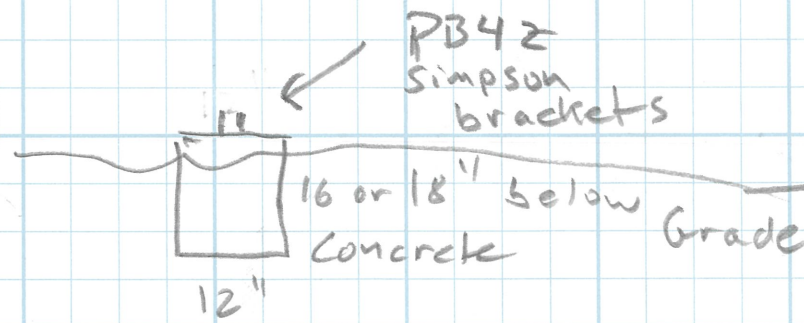
Scale  
1/2" = 1'



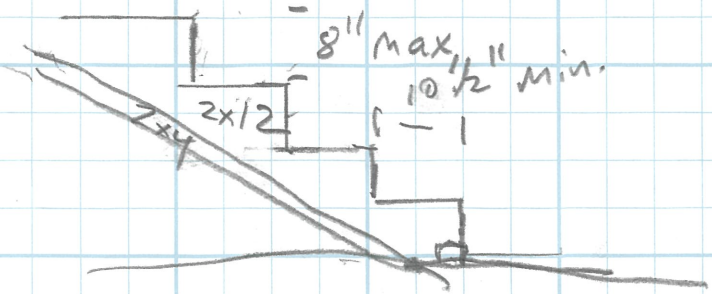
Deck

Deck constructed with 4x8 PT Beams post up from 12"x12"x16" Deep Concrete Footings post secured concrete with PB42 brackets  
 Simpson 4x BCS 2max post to beam  
 h2.5 Hurricanes from Joists to beam

Deck Footings



Scale  
1/2" = 1'



stair stringers calculated and cut from 2x12 PT boards with < 8" Risers + 10 1/2" treads  
 stair stringers strengthened with sistered 2x4's

